



Species: *Syringa reticulata*

(si-ring'gah reh-tick'you-lay-tah)

Japanese Tree Lilac

Cultivar Information

* See specific cultivar notes on next page.

Ornamental Characteristics

Size: Tree < 30 feet

Height: 25' - 30' (spread 15' - 25')

Leaves: Deciduous

Shape: oval tree

Ornamental Other: slow growing

Environmental Characteristics

Light: Full sun

Hardy To Zone: 3a

Soil Ph: Can tolerate acid to alkaline soil (pH 5.0 to 8.0)

Salt Tolerance: Tolerates salty soil

Environmental Other: large, cream colored flowers in late June; suitable for large containers; lustrous brown bark with horizontal lenticels similar to cherry bark; slow growth rate

CU Structural Soil™: Yes

Insect Disease

resistant to powdery mildew; borers and scale may be problematic in warmer regions

Bare Root Transplanting

Easy

Other

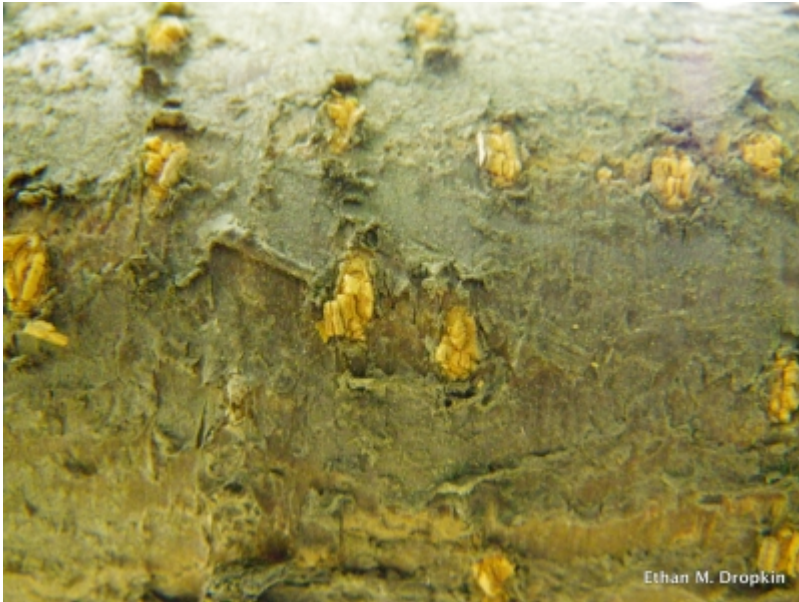
transplant in spring or fall, native to Northern Japan

Cultivars for *Syringa reticulata*

Showing 1-7 of 7 items.

| Cultivar Name | Notes |
|----------------|--|
| Summer Snow | 'Summer Snow' - round, compact, 16', heavy flowering |
| Chantilly Lace | 'Chantilly Lace' - leaves variegated with a pale creamy yellow perimeter |
| Cameo Jewel | 'Cameo Jewel' - variegated form with yellow-cream splashed foliage |
| Ivory Silk | 'Ivory Silk' - rounded form; stocky branch structure; blooms heavily, even when young; grows to 25' tall |
| Snowdance | 'Snowdance' (a.k.a. 'Bailnce') - heavy blooming; flowers annually and begins flowering at an earlier age than the species; large, fragrant panicles of creamy white blooms; sterile variety produces no untidy, brown seedheads; lustrous, dark green foliage is slightly larger and darker than species |
| Snow Cap | 'Snow Cap' (a.k.a. 'Elliott') - round compact form; uniform habit; freely blooming; large, fragrant, creamy-white flowers; grows to 15'-20' tall x 10'-12' wide in 10 years |
| Regent | 'Regent' - canopy grows more narrowly than other <i>S. reticulata</i> selections; grows vigorously; produces abundant white flower clusters in summer; grows 25 - 30' tall x 15' wide |

Photos



Syringa reticulata - Bark



Syringa reticulata - Flowers



Syringa reticulata - Flowers



Syringa reticulata - Leaves, Fruit



Syringa reticulata - Habit



Syringa reticulata - Leaf



Syringa reticulata - Habit



Syringa reticulata - Fruit



Syringa reticulata - Buds